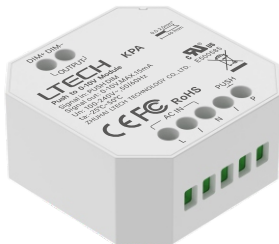


LTECH

Push to 0-10V Module

Model: KPA



Manual

www.ltech-led.com

Product Introduction

- Paired with a push switch, it instantly transforms into a 0-10V dimmer, enabling traditional switches to easily adjust professional lighting effects.
- A short press turns the light on or off, offering simple operation.
- A long press allows for brightness adjustment, giving you full control.
- It automatically memorizes the state after a power outage, restoring the brightness and switch status when power is resumed.
- With its compact size, it can be easily installed in European, American, and national standard junction boxes, making it suitable for a variety of installation scenarios.

Technical Specs

Model	KPA
Input voltage	100-240V~,50/60Hz
Input signal	PUSH DIM
Output signal	0-10V, MAX.15mA
Working temperature	-25°C~50°C
Product size	L45×W45.5×H20.5(mm)
Product weight	30g

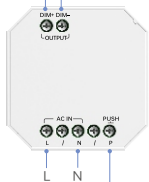


RoHS

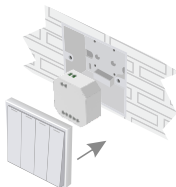


Product Images

0-10V Signal output



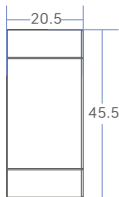
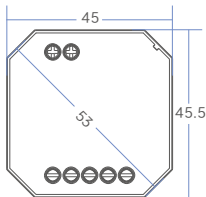
Push switch terminals



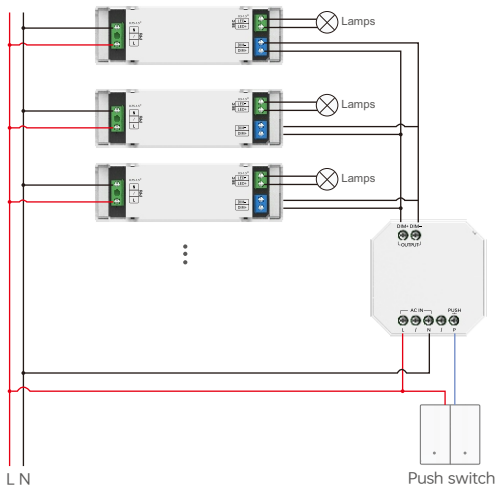
Put the product into the junction box

Product Size

Unit: mm



Wiring Diagram



Attention

- Product installation and commissioning should be done by a qualified professional.
- LTECH products are and not lightningproof non-waterproof(special models excepted). Please avoid the sun and rain. When installed outdoors, please ensure they are mounted in a water proof enclosure or in an area equipped with lightning protection devices.
- Good heat dissipation will prolong the working life of products. Please ensure good ventilation.
- Please check if the working voltage used complies with the parameter requirements of products.
- The diameter of wire used must be able to load the light fixtures you connect and ensure the firm wiring.
- Before you power on products, please make sure all the wiring is correct in case of incorrect connection that causes damage to light fixtures.
- If a fault occurs, please do not attempt to fix products by yourself. If you have any question, please contact your suppliers.

Warranty Agreement

- Warranty periods from the date of delivery: 5 years.
- Free repair or replacement services for quality problems are provided within warranty periods.

Warranty exclusions below:

Following conditions are not within the guarantee range of free repairing or replacement services:

- Beyond warranty periods.
 - Any artificial damage caused by high voltage, overload, or improper operations.
 - Products with severe physical damage.
 - Damage caused by natural disasters and force majeure.
 - Warranty labels and barcodes have been damaged.
 - No any contract signed by LTECH.
1. Repair or replacement provided is the only remedy for customers. LTECH is not liable for any incidental or consequential damage unless it is within the law.
 2. LTECH has the right to amend or adjust the terms of this warranty, and release in written form shall prevail.
- * This manual is subject to changes without further notice. Product functions depend on the goods. Please feel free to contact our official distributors if you have any question.