

Xiaolei

Super Smart Knob

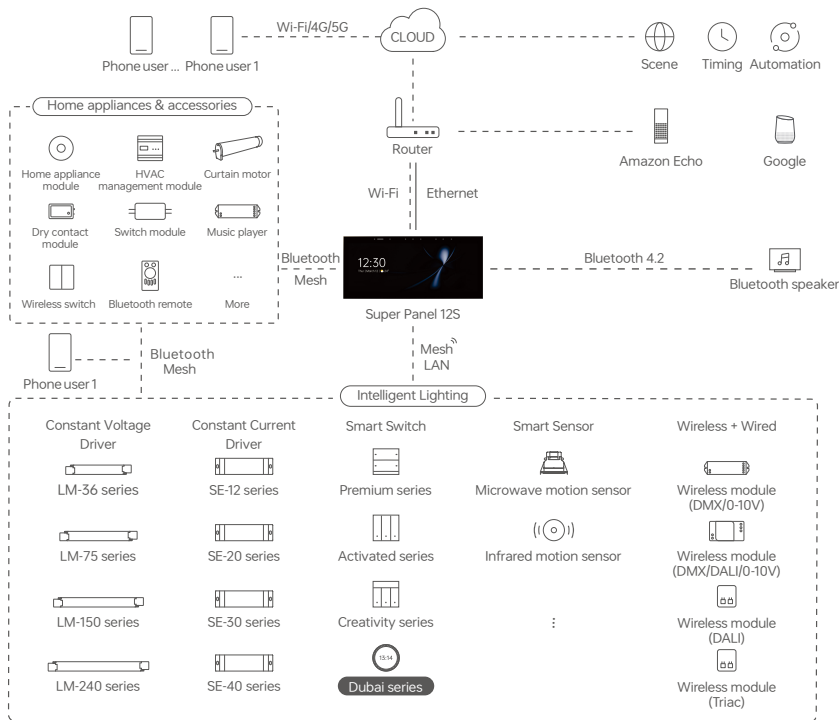
Model: GQ PRO



Manual

www.xiaolei.com.cn

System Diagram



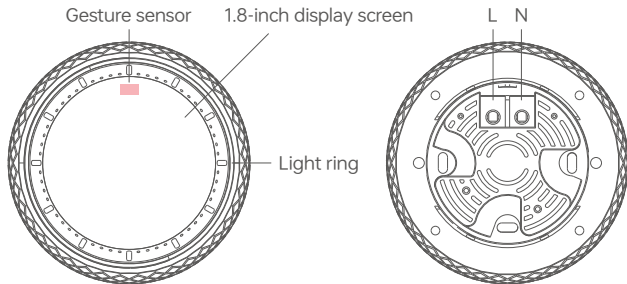
Product Introduction

GQ PRO is a super smart knob based on Bluetooth Mesh communication. Its outer ring is made of brass, which is processed into 360 diamond-cut surfaces through 5-axis CNC machining. The rotation comes with a damped feel and the sound effect of a mechanical watch. It supports three interaction methods: knob rotation, screen touch, and gesture recognition, allowing you to elegantly control the whole-house smart ecosystem: a light twist of the fingertip enables stepless adjustment of lights; a gentle gesture swipe allows for smooth switching of devices; with a simple touch, the temperature and humidity of the air conditioner are fully under your control. It elevates smart control to an artistic enjoyment, perfectly interpreting the integration of technology and luxury.

Technical Specs

| | |
|---------------------|---|
| Model | GQ PRO |
| Wireless Type | Bluetooth 5.0 SIG Mesh |
| Control Type | Lighting, air conditioning, fresh air, floor heating, curtains, switch panels, local scenes, etc. |
| Control Method | Touch, knob, gesture |
| Power Supply | 100-240V~, 50/60Hz |
| Display | 1.8-inch, 360×360 resolution |
| Working Environment | -15~50°C, humidity≤85%RH |
| Installation Method | European-style junction box, wood panel finish, rock slab, etc. |
| Net Weight | 360g |
| Dimensions | 84×84×74.5mm (L×W×H) |
| Colors | Noble Sliver/24-Karat Gold/Crystal |

Product Overview

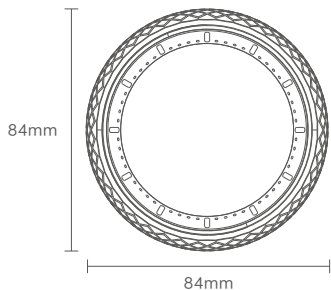


Accessory Diagram

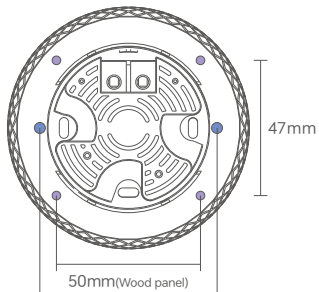
| | | | | | |
|---------------------------------------|----------------------------|-----------------------------------|------------------------------|-----------------|-------------------------|
| | | | | | |
| Type A screw×2 CA 3×8mm | Type B screw×4 PB 2×8mm | Type C screw×3 PB 3×30mm | Type C screw×2 PB 2.3×6mm | Type C buckle×3 | Type C cover plate×1 |
| European junction box installation | Wood panel installation | Rock slab/wood panel installation | | | |

Product Size

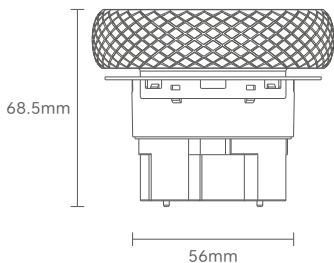
Unit: mm



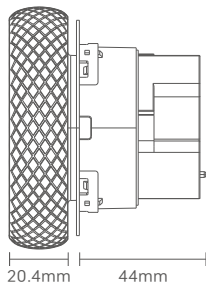
(Front view)



(Bottom view)



(Top view)



(Right view)

Installation Steps

Method 1: European junction box installation

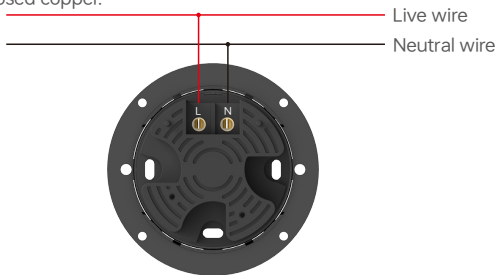
① Turn off the circuit breaker and remove any concrete or corrosion that are inside the European junction box. Trim each wire in the wall box to about 10cm in length. Use a flat-head screwdriver to pry open the bottom box of the super panel.



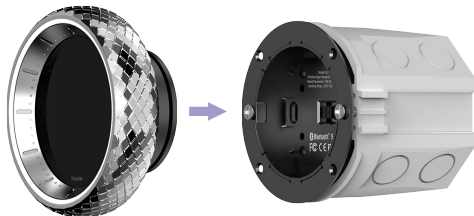
② Hold the knob and the power box with both hands, and apply a gentle, opposite pulling force in the direction perpendicular to the plane of the magnetic interface until they are completely separated.



- ③ Connect live wire to smart knob's L port, neutral wire to N port. Ensure good contact with terminals and no exposed copper.



- ④ Fix the power box to the junction box with 2 Type A screws (CA 3×8mm), ensuring the power box fits tightly against the wall. Keep the LOGO on the knob screen facing upward, place the knob into the power box until a "click" is heard, then gently press the knob to make it fit tightly against the power box with no gaps. This indicates the installation is complete.



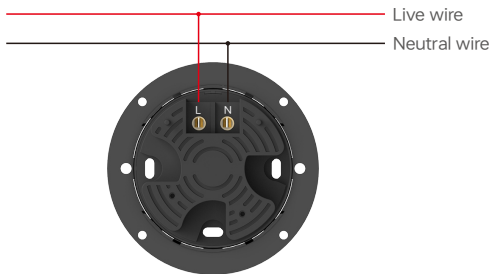
Method 2: Wood panel finish installation

(25mm \geq wood thickness \geq 10mm; opening size Φ 60mm - Φ 65mm)

① Hold the knob and the power box with both hands, and apply a gentle, opposite pulling force in the direction perpendicular to the plane of the magnetic interface until they are completely separated.



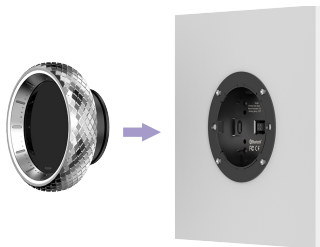
② Connect live wire to smart knob's L port, neutral wire to N port. Ensure good contact with terminals and no exposed copper.



- ③ Put the power box into the wood panel hole, ensuring the silk screen on the power box is oriented correctly. Secure the power box to the wood panel with 4 Type B screws (PB 2×8mm).



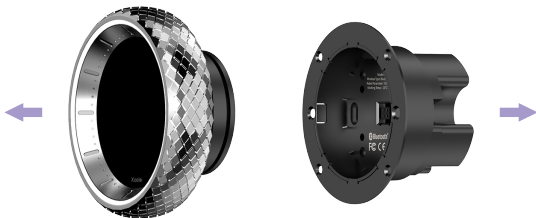
- ④ Keep the LOGO on the knob screen facing up, place the knob into the power box until a "click" is heard, then gently press the knob to make it fit tightly against the power box with no gaps. This indicates the installation is complete.



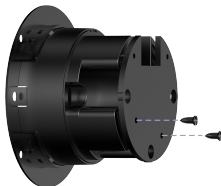
Method 3: Rock slab installation

(25mm \geq rock slab thickness \geq 12mm; opening size Φ 60mm - Φ 65mm)

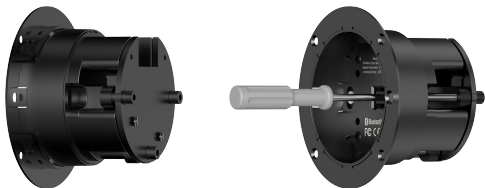
① Hold the knob and the power box with both hands, and apply a gentle, opposite pulling force in the direction perpendicular to the plane of the magnetic interface until they are completely separated.



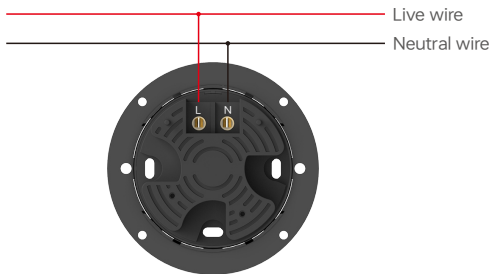
② Secure the power box to the cover plate with 2 Type C screws (PB 2.3 \times 6mm).



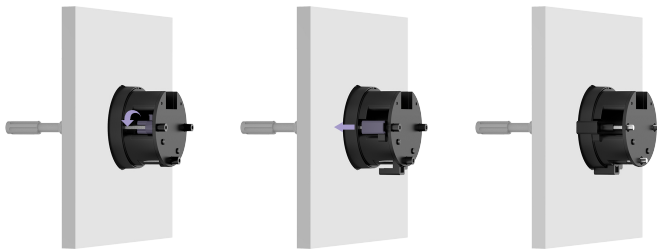
③ After installing 3 Type C buckles, use 3 Type C screws (PB 3×30mm) to temporarily fix the buckles without fully tightening them.



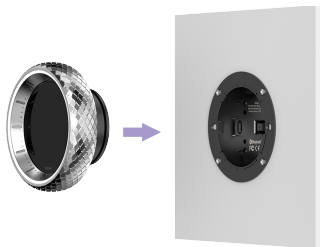
④ Connect live wire to smart knob's L port, neutral wire to N port. Ensure good contact with terminals and no exposed copper.



⑤ Put the power box into the rock slab hole, ensuring the silk screen on the power box is oriented correctly. Rotate the 3 Type C buckles outward and press them tightly against the rock slab, then use 3 Type C screws (PB 3×30mm) to lock the buckles.

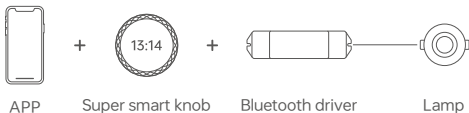


⑥ Keep the LOGO on the knob screen facing up, place the knob into the power box until a "click" is heard, then gently press the knob to make it fit tightly against the power box with no gaps. This indicates the installation is complete.

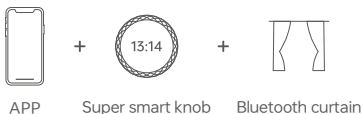


Recommended Applications

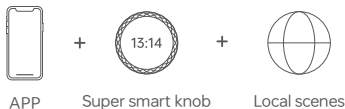
1. Pair with a Bluetooth driver to achieve wireless control of lamps.



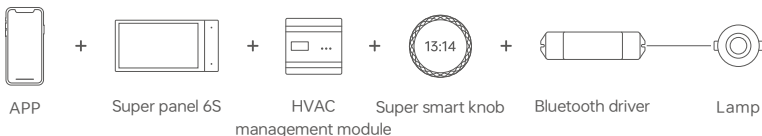
2. Pair with a Bluetooth curtain motor to realize intelligent opening and closing of curtains.



3. Supports local scenes, gateway-free, controllable even offline.



4. Whole-house smart home solution, compatible with more third-party platforms.



Usage Introduction

1. Page turning



Sliding the touch screen
left and right



Rotating the knob
left and right

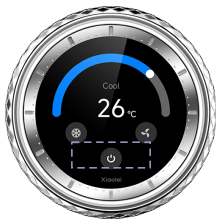


5-15cm air gesture
waving

2. Returning to the menu



Double-clicking this area



Sliding this area to the right



5-15cm air gesture
waving

3. Control device



Sliding the touch screen



Rotating the knob
left and right

4. Enter device



Clicking the touch screen



5-15cm air gesture
push forward

App Operating Instructions

1. Register an account

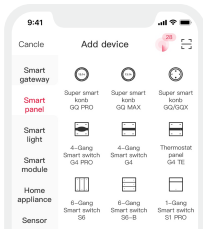
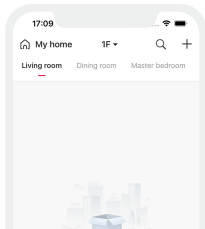
Scan the QR code below with your mobile phone, follow the prompts to complete the APP installation, and then you can log in/register.



Scan and download the App
iOS/Android

2. Network configuration

Connect the super smart knob to the power supply and wait for the device to start. Open the APP, click the "+" in the upper right corner to enter the device addition list, select "Smart Panel - Super Smart Knob GQ PRO", and complete the addition according to the on-screen prompts.

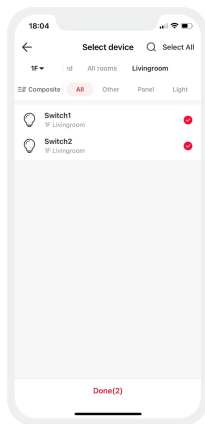
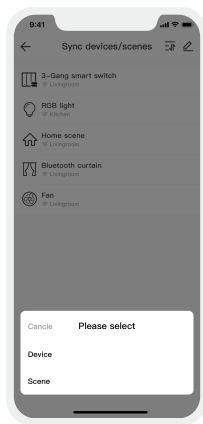
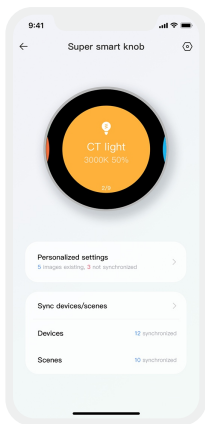


3. How to control devices/scenes via the knob

Adding a device: Please refer to the instruction manual of the relevant product and add the device as prompted.

Creating a scene: Switch to the [Smart] menu, click the "+" in the upper right corner to create a scene. You can modify the scene name, icon, etc. as prompted. Click "Add Action" to set the desired action and delay time.

Displaying a device/scene: Enter the super smart knob interface, click "Sync Devices/Scenes" to enter the interface. Click the icon in the upper right corner, select the device/scene you want to control on the super smart knob, and then click "Done".



Restore to Factory Settings

Method 1:

Enter the "Settings" interface, quickly press the "Xiaolei" LOGO 5 times in short presses. A prompt to restore factory settings will pop up. After clicking "Confirm", the system will restart automatically. Once the restart is complete, it indicates that the device has been restored to factory settings.

Method 2:

First, ensure that the Super Smart Knob is properly powered on and online. Then, open the L-Home APP, find the device, and enter its settings page. Click the "Delete Device" button. When the interface prompts "Deletion Successful", it indicates that the device has been successfully restored to factory settings.



Figure 1

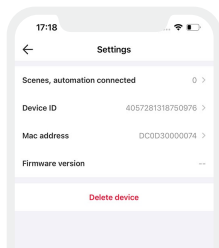


Figure 2

Attentions

- Product installation and commissioning should be done by a qualified professional.
- LTECH products are and not lightningproof non-waterproof (special models excepted). Please avoid the sun and rain. When installed outdoors, please ensure they are mounted in a water proof enclosure or in an area equipped with lightning protection devices .
- Good heat dissipation will prolong the working life of products. Please ensure good ventilation.
- Please check if the working voltage used complies with the parameter requirements of products.
- The diameter of wire used must be able to load the light fixtures you connect and ensure the firm wiring.
- Before you power on products, please make sure all the wiring is correct in case of incorrect connection that causes damage to light fixtures.
- If a fault occurs, please do not attempt to fix products by yourself. If you have any question, please contact your suppliers.

Warranty Agreement

- Warranty periods from the date of manufacture: 2 years
- Free repair or replacement services for quality problems are provided within warranty periods. Warranty exclusions below:

Warranty exclusions below:

Following conditions are not within the guarantee range of free repairing or replacement services:

- Beyond warranty periods.
- Any artificial damage caused by high voltage, overload, or improper operations.
- Products with severe physical damage.
- Damage caused by natural disasters and force majeure.
- Warranty labels and barcodes have been damaged.
- No any contract or invoice signed by LTECH .

1. Repair or replacement provided is the only remedy for customers. LTECH is not liable for any incidental or consequential damage unless it is within the law.

2. LTECH has the right to amend or adjust the terms of this warranty. The warranty that issues in writing shall prevail.

- * The content of this manual is subject to change without prior notice. If there is any discrepancy between the content and the functions of the product you are using, the actual product shall prevail. For any questions, please contact the supplier.